



## Materials:

1. Scissors
2. Glue
3. Paper cutter

## Instructions:

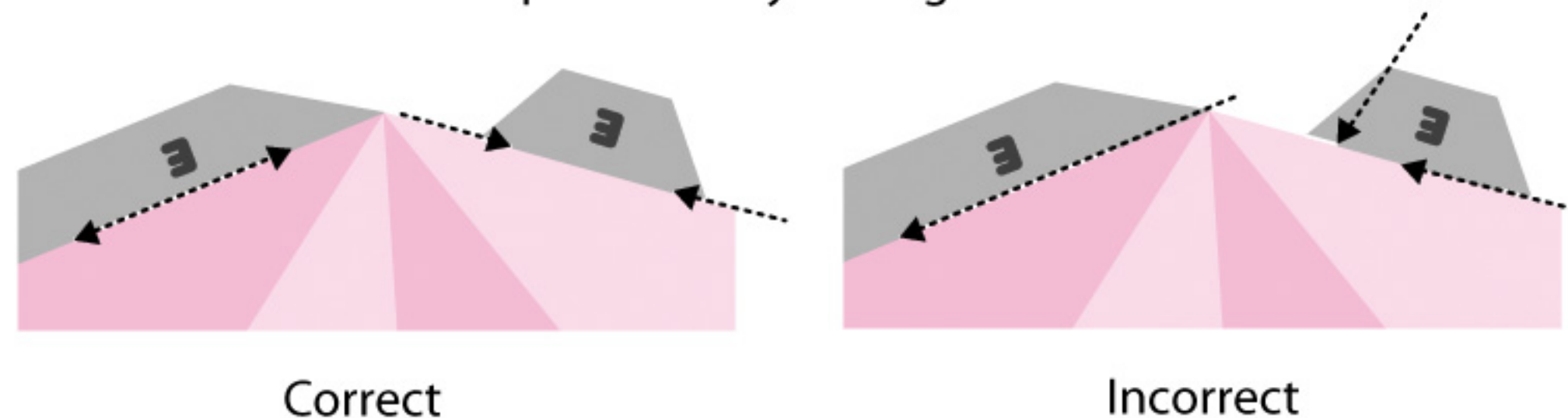
Step 1: Print the design on thick paper.



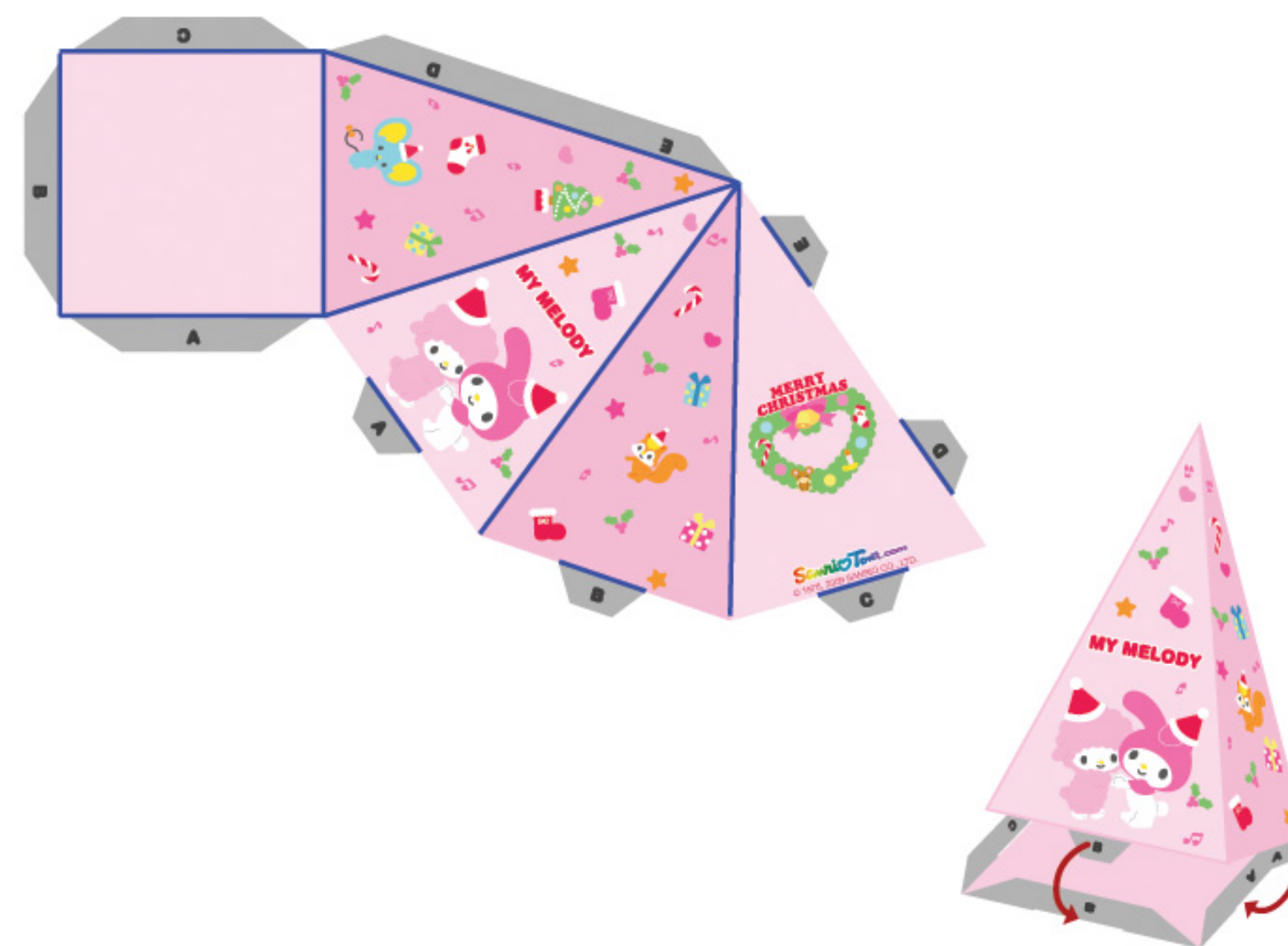
Step 2: Cut the pattern carefully as indicated with the red line.



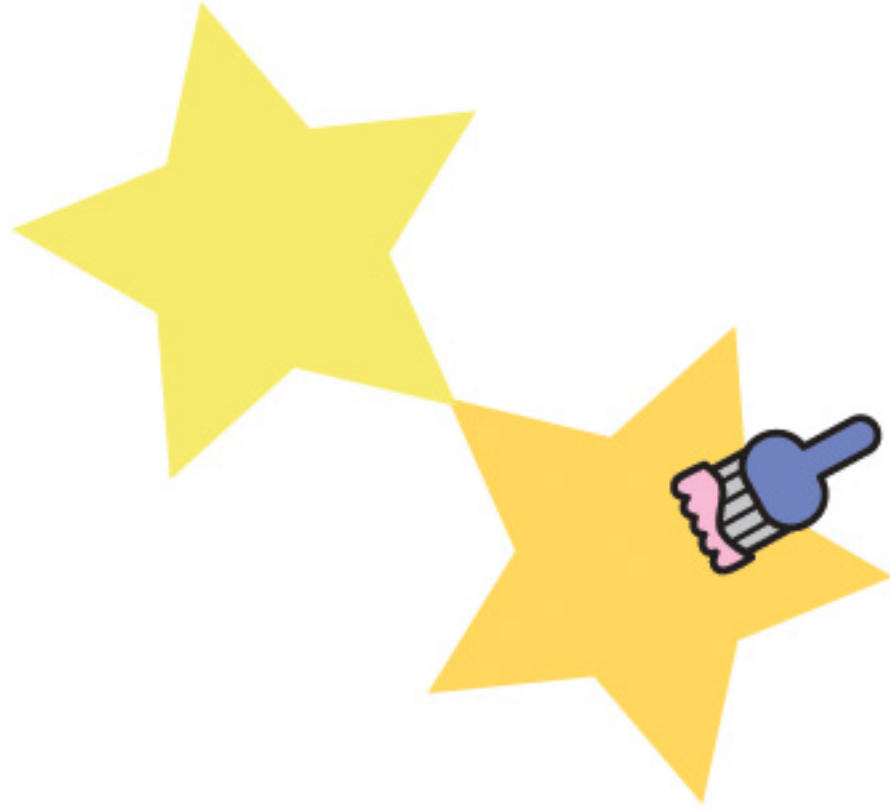
Step 3: Cut the slots with a paper cutter carefully. This is very tricky, so it would be best to ask an adult for help! Make sure you don't cut the flap all the way through!



Step 4: Fold the tree along the blue lines and insert flap A to slot A, flap B to slot B, and so on.



Step 5: Finally, cut the stars and stick them on the front and back side of the tree.



Step 6: And now you have your very own paper-cut, Sanrio tree!  
Merry Christmas!

